

Education and Digital Literacy Strategy

City Council

February 27, 2024

Jill Bourne, City Librarian

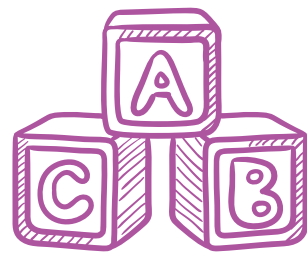
Background

Education and Digital Literacy Strategy

Adopted by City Council in May 2018

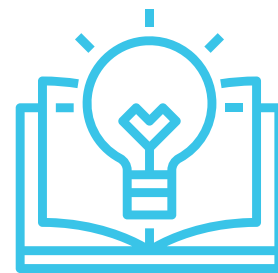


Educational Attainment Areas or Planks



Early Education

Entering Kindergarten
Ready to Learn & Succeed



Expanded Learning

Expanding Education
Beyond the School Day



College and Career Pathways

Meaningful Opportunities on
Pathways to Self-Sufficiency



Digital Literacy

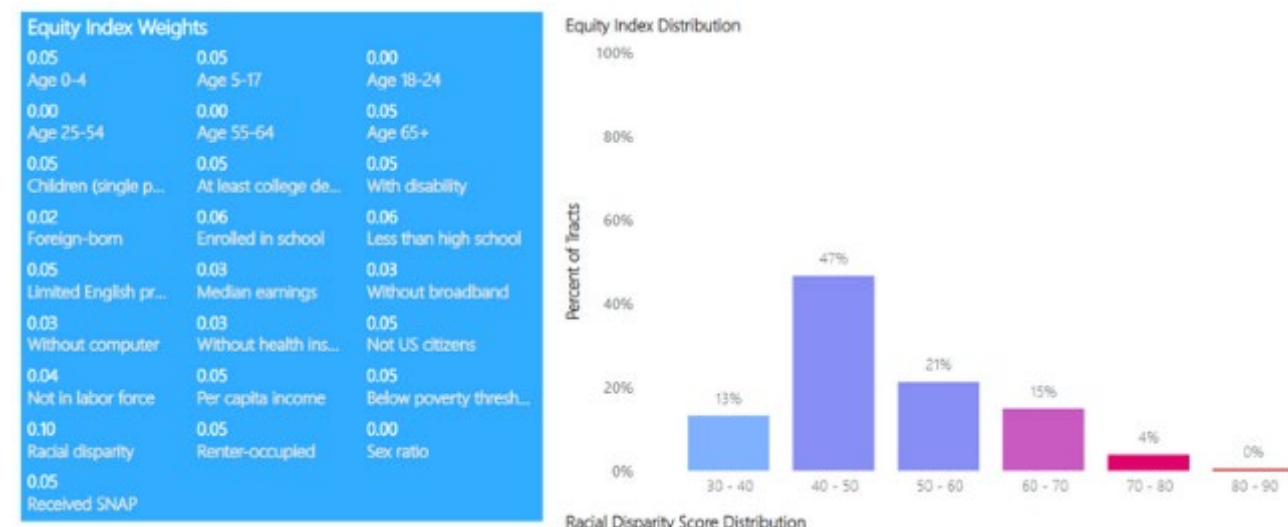
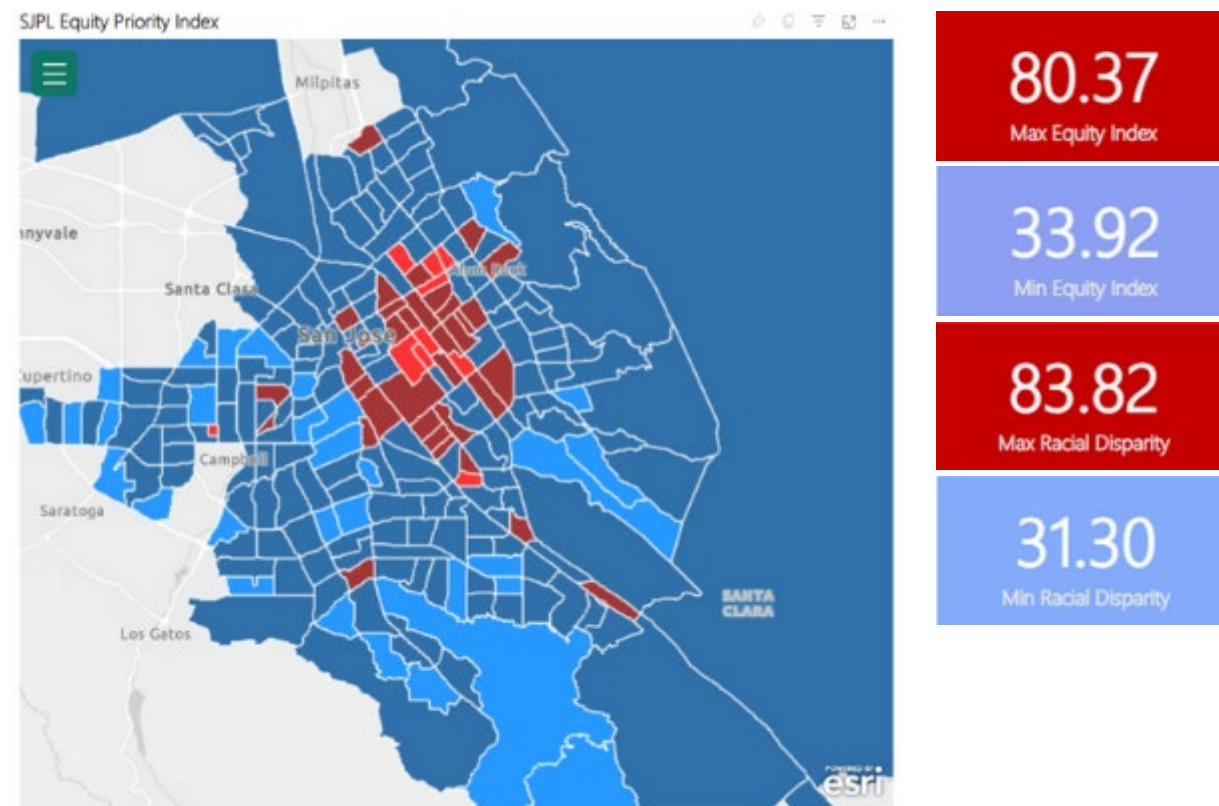
Access, Affordability,
and Adoption



Education Policy Approved by City Council February 2020

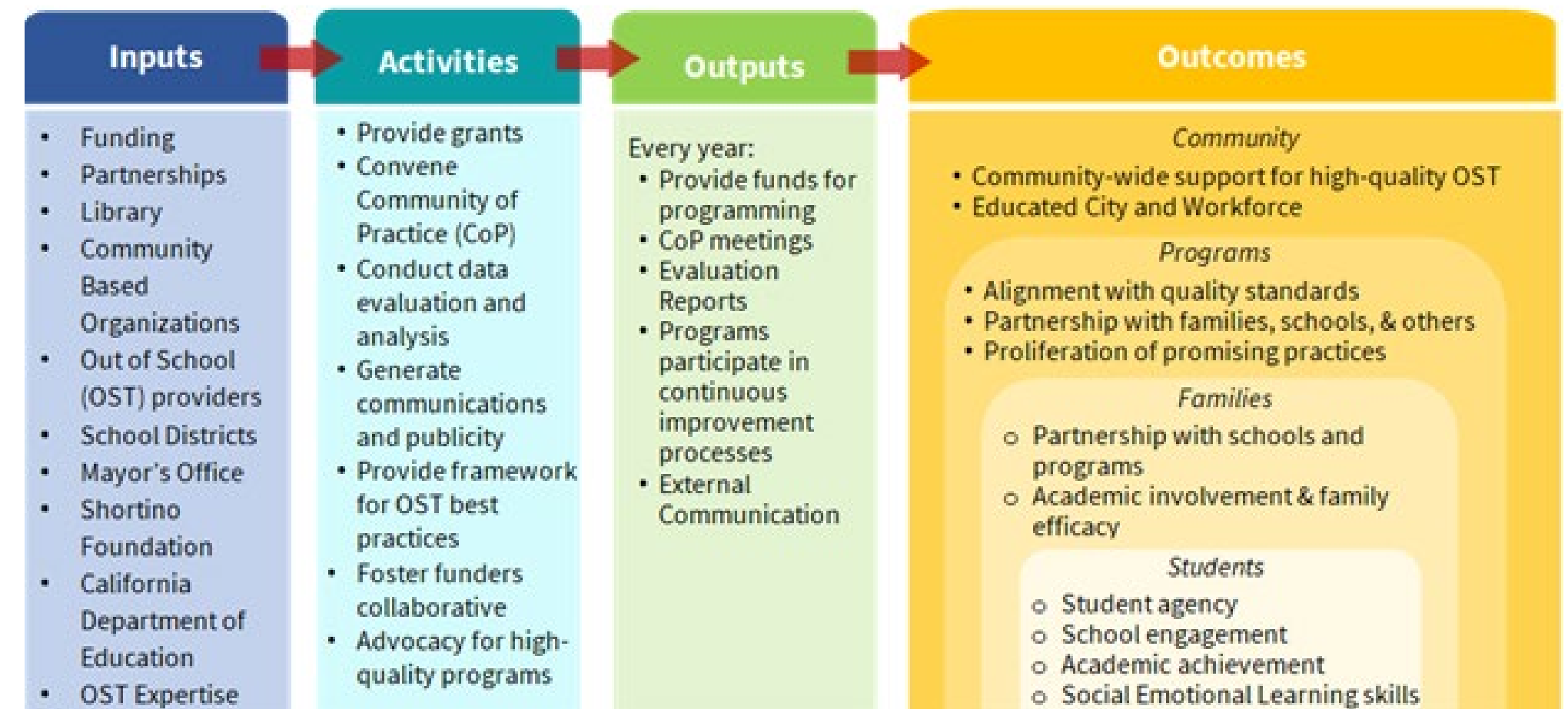
Core Values

Equity + Opportunity

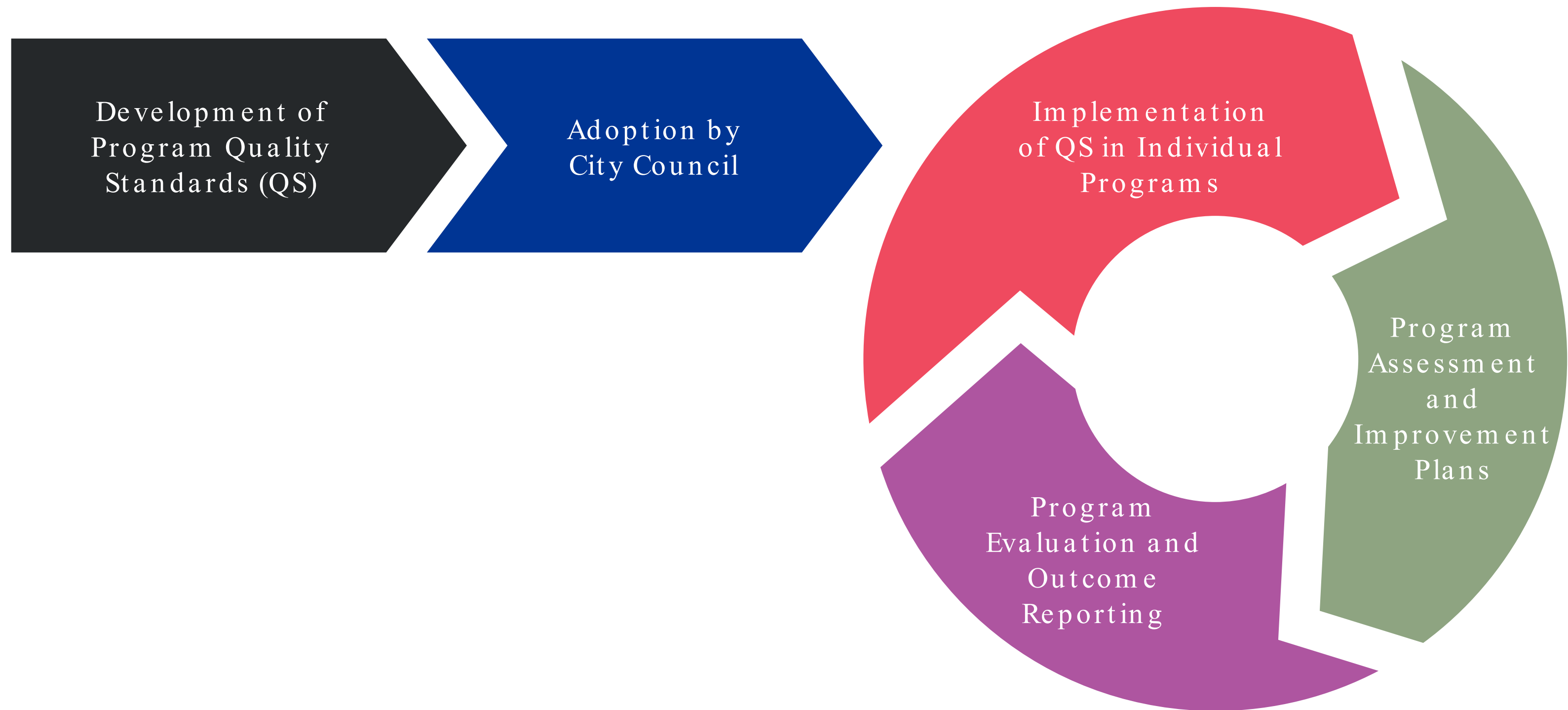


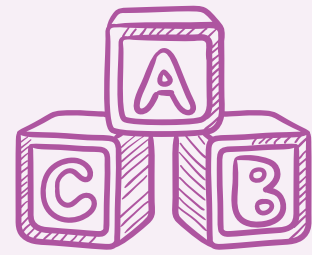
Quality + Accountability

Logic Model for SJ Learns



Quality Improvement Process





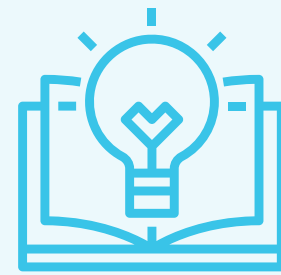
Early Education

QS Adoption
March 26, 2019

QS Implementation
17/19 Programs (Lib/PRNS)

Assessment &
Improvement Plans
At Standard - Proficient
Identify Strengths
Plan Growth Areas

Evaluation & Outcomes
Utilize caregiver feedback
Program quality
Reading readiness
Social / emotional readiness



Expanded Learning

QS Adoption
May 17, 2019

QS Implementation
9/10 Programs (Lib/PRNS)

Assessment &
Improvement Plans
At Standard – Advanced
CA State Requirements
Identify Promising Practices

Evaluation & Outcomes
External Evaluator Reports
State Quality Reporting
Data Partnerships with
Schools



College and Career Pathways

QS Adoption
December 1, 2020

QS Implementation
12/26 Programs Citywide

Assessment &
Improvement Plans
Emerging – Advanced
Growth Plans
Citywide Expansion

Evaluation & Outcomes
Skills Developed
Certifications/Diplomas
Achieved
Jobs Attained



Digital Literacy

QS Adoption
May 19, 2020

QS Implementation
IN PROGRESS

Assessment &
Improvement Plans
Digital Inclusion Fund
Program Implementation
(Transition in 2023)

Evaluation & Outcomes
Fold into Digital Equity &
Empowerment Priority



Program Status and Outcomes

**SAN JOSE RECREATION
PRESCHOOL**

Basic QS Standard | Fall 2022/Spring 2023

286

Participating
children, ages 3-5

13

City sites

19

Classes

Assessment

Child learning level and
environmental assessments
conducted throughout the
program

Data

ZIP code
Age
Gender
Demographics



Early Education: Storytime Programs



Proficient QS Standard | Spring 2023

1,653

Programs
offered

52,093

Program
attendees

9

Program types:
Inclusive, bilingual,
music and movement,
family, baby, etc.

97%

Caregiver
satisfaction

98%

Caregivers report
improved
knowledge and skills

Data

ZIP code
Caregiver survey



Early Education: Camp San Jose Jr.



Pending

334

Program
participants

Data

ZIP code
Age
Gender
Demographics

Assessment

Parent and youth
surveys collected



Expanded Learning: San José Learns



External Evaluation by Social Policy Research | August 2023

1,215

Student
participants

7

School
partner sites

Data

- External evaluator (annual)
- Student demographics
- Educational attainment
- Related school outcomes, data agreements w/schools

95%

Students
improved in
reading

92%

Students
improved in
mathematics



Expanded Learning: SJ Learns Tutoring Matters



External Evaluation by Innovate Public Schools | Spring 2024

3

Grants
awarded to
partners:

- Elevate Tutoring
- Alpha Public Schools
- Bay Area Tutoring Assoc.

111

Students received
1:1 high-dosage
tutoring in pilot

1,500

Students in
proposed
expansion plans

Data

- External eval. (2024)
- Student demographics
- Educational improvement
- Parent survey



Expanded Learning: Recreation of City Kids (R.O.C.K.) and Afterschool School Education and Safety (A.S.E.S.)



Standard QS | Sept. 2022, Feb. 2023, April 2023

28

Locations

1,114

Program
participants

Data

ZIP code

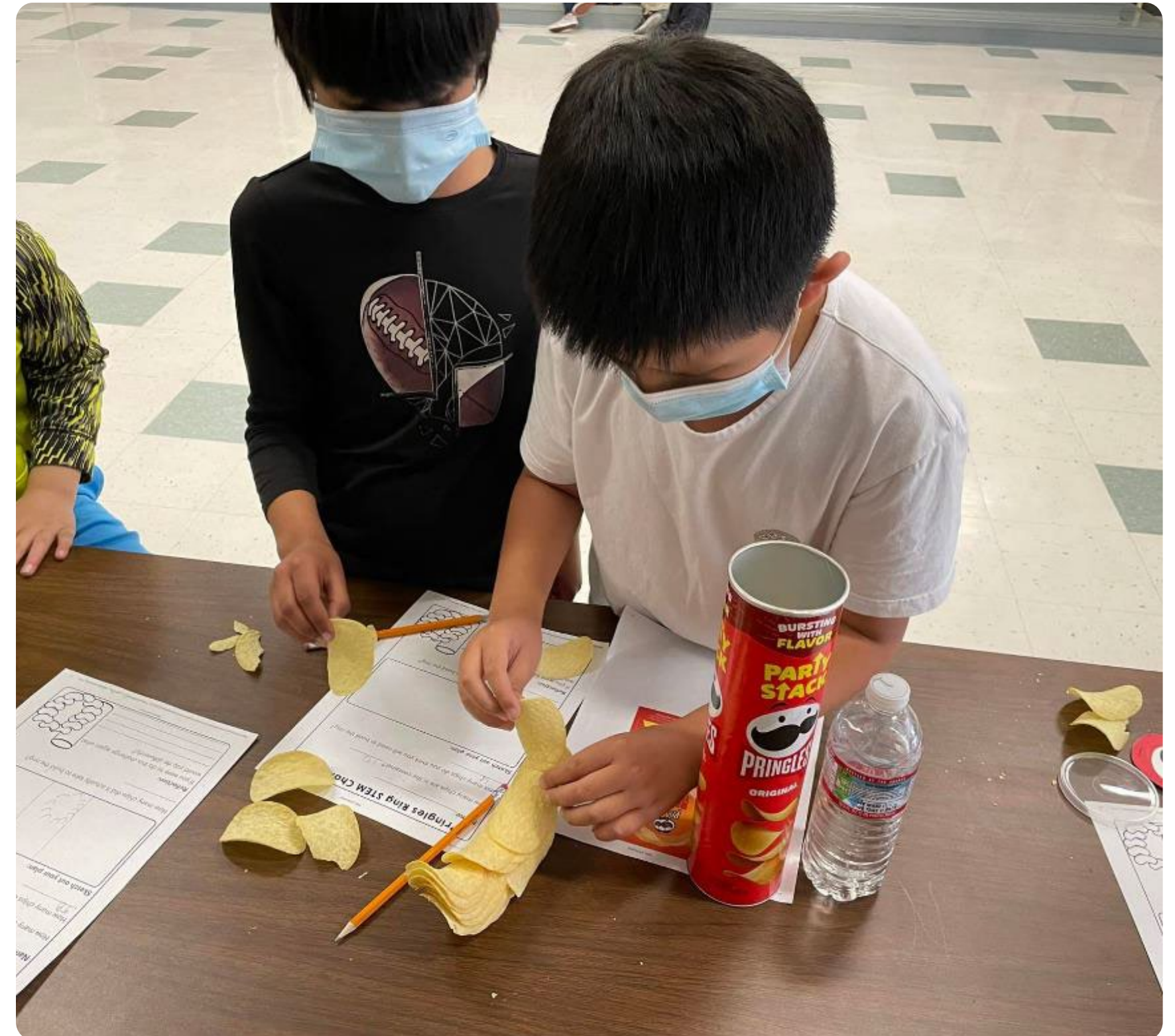
Age

Gender

Demographics

Assessment

Observation tool, w/ 52 metrics aligned with CA QS for
Expanded Learning Programs.



College and Career Pathways: Career Online High School



Emerging QS | Spring 2023

30
Scholarships
awarded (2023)

174
Cumulative
graduates

98%
Would recommend
the program

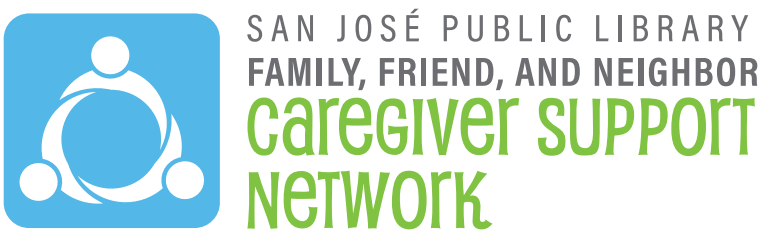
73%
Graduation
rate to date

Data

District
Age
Gender
Demographics
Career certificates



College and Career Pathways: Family Friend, and Neighbor Caregiver Support



Advanced QS | Spring 2023

129
Program
participants

1,300
Children
served

3,350+
Professional
development hours

96%
Participants
reported increased
knowledge

85%
Completion of
workforce
certifications

Data
ZIP code
Age
Gender
Demographics



RESILIENCE
CORPS

Advanced QS | Spring 2023

115
Program
participants

6
Host
organizations

6,500
Students
served

59,000
Hours worked

39%
Post-program
employment
(May 2023)

Data
ZIP code
Age
Gender
Demographics





Advanced QS | Fall 2023

375
Subsidized
summer interns

20
Training hours
per intern

Data
ZIP code
Age
Gender
Demographics

88%
Report new
learned skills

82%
Report increased
teamwork skills

91%
Report improved
communication
skills



College and Career Pathways Citywide Expansions

Emerging QS Standard | Fall 2023



City Intern
Workshops

55 Program
participants



Fire Explorer
Program

23 Program
participants



San José
Bridge

250 Estimated
participants
(FY 2023/24)



Fleet Mechanic
Apprenticeship
Program

6 Program
participants



Resilience Corps
Climate Change
Pathways

161 Program
participants



At QS Standard | Summer 2023

418
Programs

4,114
Participants

Data
Attendance
Surveys
Demographics

43%
Of participants
identify as girls

79%
Of participants said they
were excited to continue
learning to code





QS Assessment Pending

9,340

Hotspot and
computing
devices

98%

Hotspot check-
out rate

Data

Unique uses
Surveys
Census data

8

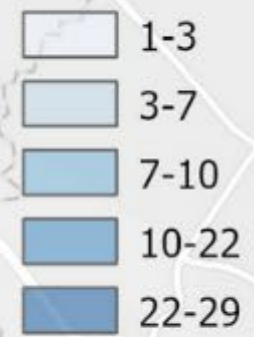
Wi-Fi attendance
areas

96,000

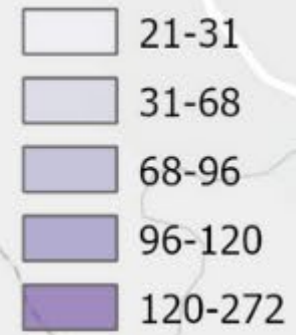
Community Wi-Fi
users per month
(Avg.)



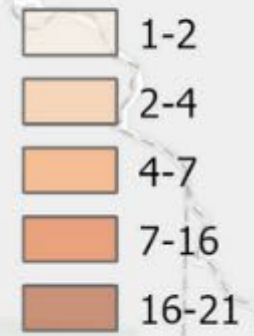
COHS Participants



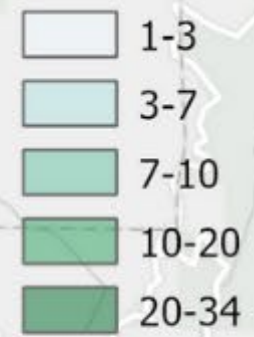
SJ Learns Participants



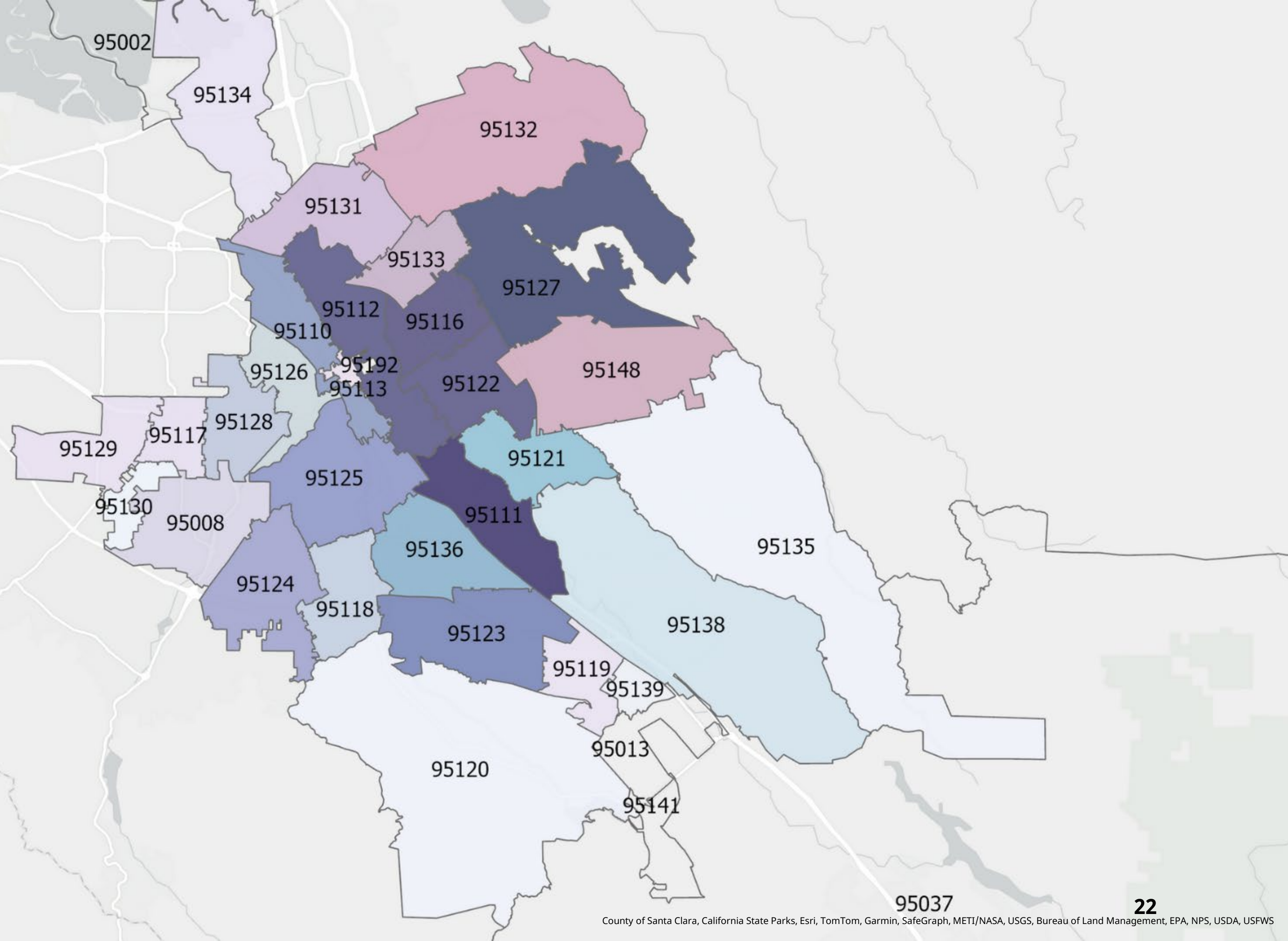
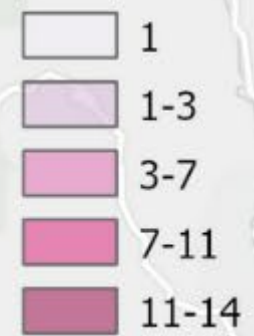
Resilience Corps - Learning



Resilience Corps - Climate



FFN Participants



Provides Part of the Framework for Building a Broader Comprehensive Plan



Address needs beyond education.



Use these programs as entry points to pathways, connecting to other systems of support.



Facilitate residents through systems to ensure a seamless experience and maintain engagement.



Further link data about educational outcomes to related employment, safety, and wellness goals.



Align current City efforts to County and partner programs.

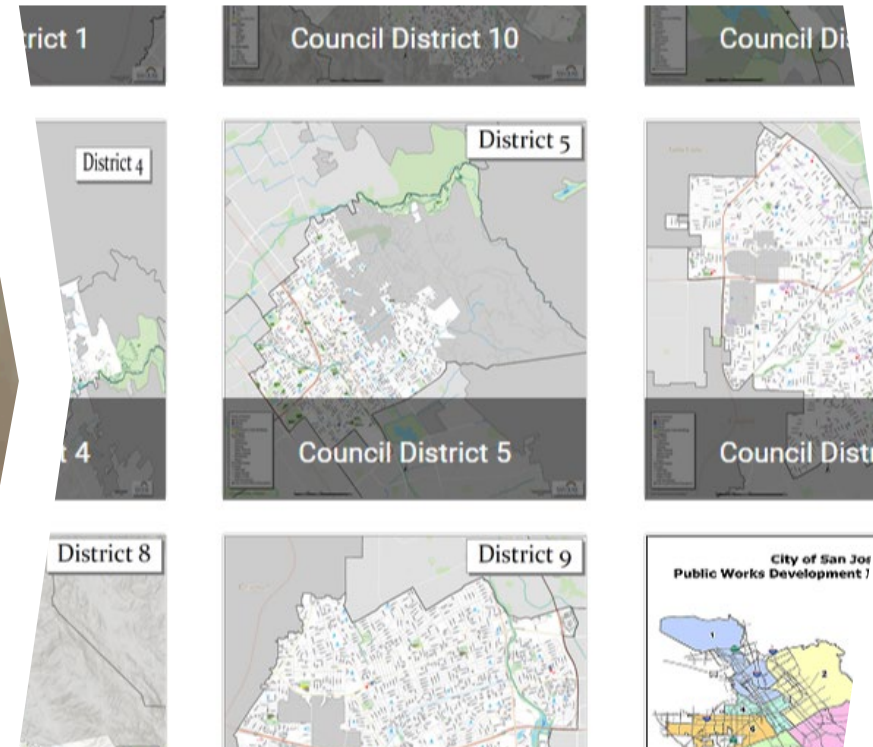


Expand collective impact.

Next Steps in the Education and Digital Literacy Strategy



Continue implementation of Quality Standards and continuous quality improvement process.



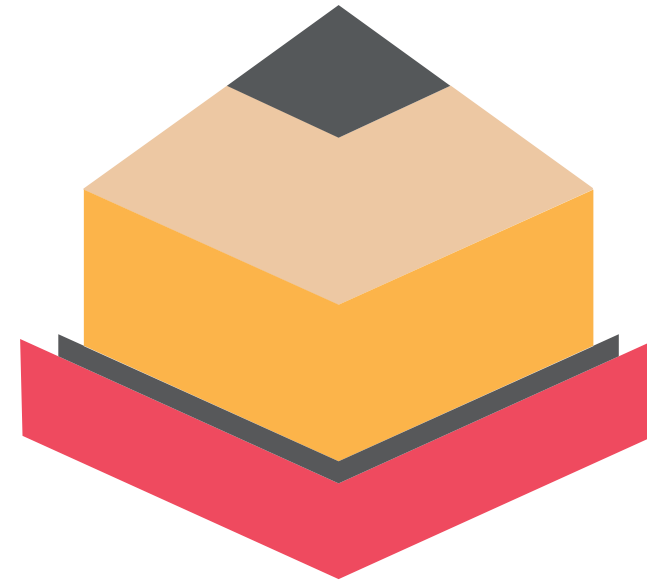
Complete development of reporting dashboard, using participant data, evaluations, and outcomes for City Education programs.



Continue next phase of College and Career Pathways project, aligning city education and workforce programs, with significant youth leadership and guidance.



Participate and align City Education programs with development of Children and Youth Services Master Plan.



Reimagining the City as a Classroom